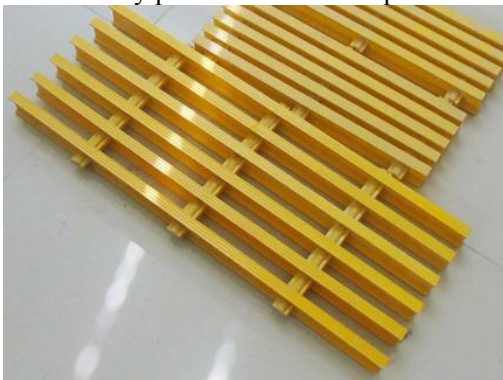


### Product description:

FRP pultrusion grating is used FRP pultrusion profiles I type as load bar, and choose tube and rod as connection pole, and through the assembly process to make the plate with space.



### Production data

I-Size (mm)	Cross rod distance (mm)	Load (kg/m <sup>2</sup> )	Color
25	300	200	yellow/grey/blue
25	200	300	yellow/grey/blue
25	100	500	yellow/grey/blue
30	300	500	yellow/grey/blue
30	200	800	yellow/grey/blue
30	100	1400	yellow/grey/blue
40	300	1000	yellow/grey/blue
40	200	1200	yellow/grey/blue
40	100	1600	yellow/grey/blue
50	300	1800	yellow/grey/blue
50	200	2000	yellow/grey/blue
50	100	2400	yellow/grey/blue

### Product advantage:

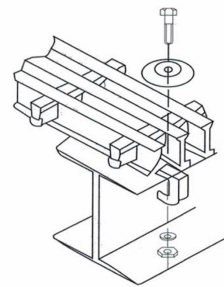
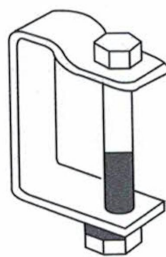
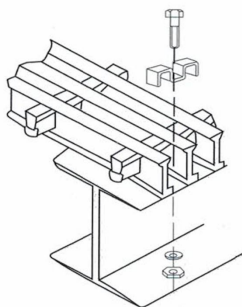
1. Anti-corrosion of many kinds chemicals, no rust, long time useful, and not maintenance
2. Anti-flaming
3. Insulation, non-magnetic
4. Have light elasticity, can reduce the persons feeling of fatigue, increase the comfortable sensation, improve the working efficiency
5. Light weight, high strength, and easy to installation
6. Color same inside and outside, and easy to selection, also can customized color, change the place environment
7. Great designability, many sized and size stable.

### Application:

Chemical, Petrochemical, Electricity, Hydraulic engineering, Urban construction, Sewage treatment plant and other corrosion places.

Walkway, Bridge plate, Industry terrace, Working platform, Isolation strip, Stairs step and other place

### Installation and fittings:



M type Install sketch      C type Install sketch